

## CHAPTER

## 4

## VOCABULARY REVIEW WORKSHEET

*A Cell Crossword Puzzle*

Try this puzzle after finishing Chapter 4.

Use the clues below to complete the crossword puzzle on the next page.

**ACROSS**

1. The fluid inside a cell
6. Another name for 12 across
9. The control center of a cell
11. Special vesicles containing enzymes
12. Cells that do not have a nucleus
14. Organelle that modifies, packages, and transports materials out of the cell
18. Describes an organism that can exist only as a group of cells
22. A single \_\_\_\_\_ has all of the items necessary to carry out life's activities.
23. A combination of two or more tissues working together to perform a specific job in the body
25. British scientist who first observed cells under a microscope
26. Energy-converting organelle found in plant and algae cells
27. Anything that can live on its own

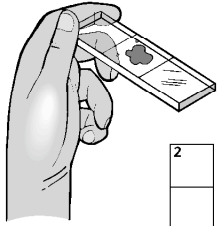
28. Groups of organs working together to perform particular jobs in the body
29. One of the structures a cell uses to live, grow, and reproduce

**DOWN**

1. All of the populations of different species that live and interact in an area
2. The cells of plants and algae have a hard \_\_\_\_\_ made of cellulose.
3. Organelles where amino acids are hooked together to make proteins
4. The cell's hereditary material
5. A group of similar cells that work together to do a specific job in the body
7. Cells that have a central nucleus and a complicated inner structure
8. All eukaryotic cells have membrane-covered compartments called \_\_\_\_\_ that form when part of the cell membrane surrounds an object and pinches off.

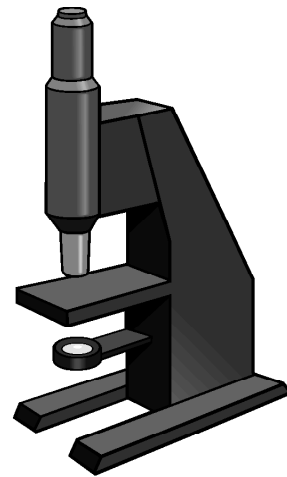
10. A group of the same kind of organisms that live in the same area at the same time
13. The cell's power plants; break down food molecules to make ATP
15. Barrier between the inside of a cell and its environment
16. Dark spot inside the nucleus that stores the materials that will be used later to make ribosomes
17. Three statements that define all living things in terms of cells
19. The cell's delivery system (abbr.)
20. Special molecule that provides energy for a cell's activities
21. A community and all of the nonliving things that affect it
24. A large membrane-covered chamber that stores liquids and is found in plant cells

### A Cell Crossword Puzzle, continued



A crossword puzzle grid with 29 numbered starting points for words. The grid is composed of white squares for letters and empty spaces for gaps. The numbers are as follows:

- 1: 11 squares, horizontal, top right
- 2: 10 squares, vertical, left side
- 3: 5 squares, vertical, middle left
- 4: 3 squares, vertical, middle right
- 5: 6 squares, vertical, far right
- 6: 6 squares, horizontal, middle left
- 7: 5 squares, horizontal, middle left
- 8: 3 squares, vertical, middle right
- 9: 6 squares, horizontal, middle right
- 10: 6 squares, vertical, middle left
- 11: 6 squares, horizontal, middle left
- 12: 10 squares, horizontal, middle right
- 13: 10 squares, vertical, far right
- 14: 6 squares, horizontal, middle right
- 15: 6 squares, horizontal, middle right
- 16: 2 squares, vertical, middle left
- 17: 10 squares, vertical, left side
- 18: 6 squares, horizontal, middle left
- 19: 4 squares, horizontal, middle left
- 20: 3 squares, horizontal, middle right
- 21: 3 squares, vertical, middle right
- 22: 4 squares, horizontal, middle left
- 23: 4 squares, horizontal, middle right
- 24: 2 squares, vertical, middle left
- 25: 4 squares, horizontal, middle left
- 26: 6 squares, horizontal, middle right
- 27: 6 squares, horizontal, middle left
- 28: 6 squares, horizontal, middle right
- 29: 6 squares, horizontal, bottom left



Copyright © by Holt, Rinehart and Winston. All rights reserved.